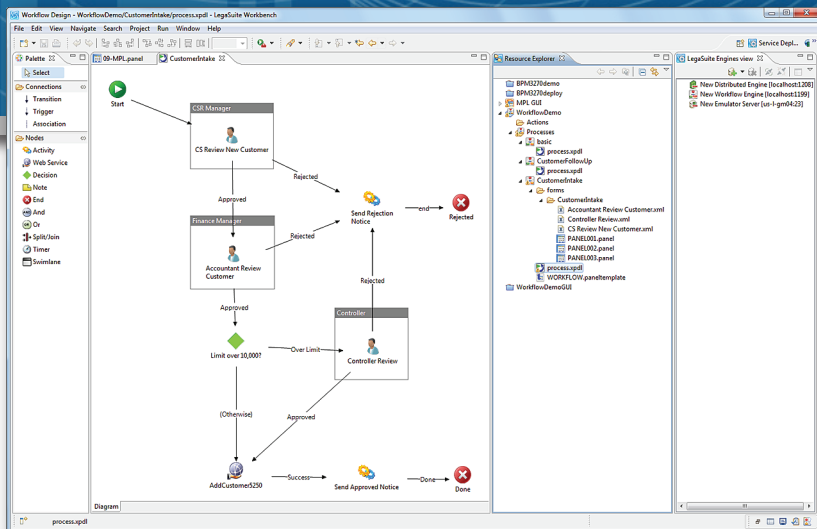


Rocket Seagull LegaSuite Workflow



People-centric business process automation

Simplify, integrate, and automate business processes modernized with LegaSuite

Seamlessly add process automation to existing LegaSuite modernized applications

Automate interaction between people and systems for faster process completion

Assign roles and groups to improve collaboration

Leverage industry standards for process automation

Ensure business process compliance with SLAs and regulations

people. applications. together.

Modernized web and mobile applications enable you to work any time, anywhere. Now you can take modernization a step further, automating workflow across multiple applications and people and creating unified user experiences for complex processes. Rocket Seagull® LegaSuite Workflow enables you to build human-centric process automation into applications you've already modernized with LegaSuite GUI. You can also incorporate web services from LegaSuite Integration and create process and audit reports using LegaSuite Insight.

designed for process automation with legasuite.

LegaSuite Workflow adds process automation and management capabilities to LegaSuite GUI applications. The Workflow Builder generates a user interface using the same templates for a consistent look. Task lists and specific actions can be dropped right into existing LegaSuite applications. You get a uniform experience throughout the entire business process, regardless of underlying applications.

people-centric workflow and automation.

Does it take three separate application windows, four phone calls, and an e-mail server just for an employee or partner to get something done and tell others about it? Turn the people-as-APIs nightmare into fast automated processes with a single LegaSuite user experience, including automated notifications and approvals.

individual user-based or role-based participation.

Assign and delegate roles to individuals, whole departments, and anyone in between. Role-based automation ensures that the appropriate people can step in and work with any process. Work doesn't stop just because someone is out sick or on vacation.

support for relevant industry standards.

LegaSuite Workflow features BPMN for process design and XPD for process storage. These standards enable you to build and store process definitions that will be recognizable to other tools.



Manage user authentication and role assignment with LDAP. Integrate with other applications, including LegaSuite applications, via SOAP/web services. Drive workflow processes with events from any other application using web services, too.

demonstrate compliance.

Automatically log all business processes and events. Store your logs and process data in a variety of databases, including SQL Server, DB2, and Oracle. You'll have everything you need to demonstrate process compliance to your board, regulatory agencies, and the like.

product requirements.

development> LegaSuite Workbench Workflow builder.

- | | | |
|---------------------|---|---|
| system requirements | ❖ Windows Vista or Windows 7 Operating System (32- and 64-bit both supported) | ❖ 2 GB disk minimum required, 10 GB or more recommended |
| | ❖ 2 GB RAM minimum required, 4 GB or more recommended | |

deployment> LegaSuite Workflow engine.

- | | | |
|---|---|---|
| Windows 2003 / 2008 / 2008 R2 server (32- & 64-bit) | ❖ Physical and virtual/PaaS deployments are supported | ❖ 2 GB RAM minimum required, 4 GB or more recommended |
| | ❖ JVM 1.6 (32 and 64 bit both supported) | ❖ 2 GB disk minimum required, 10 GB or more recommended |

- | | | |
|--------------|---|---|
| UNIX / Linux | ❖ Physical and virtual/PaaS deployments are supported | ❖ 2 GB disk minimum required, 10 GB or more recommended |
| | ❖ 2 GB RAM minimum required, 4 GB or more recommended | ❖ UNIX / Linux distribution must support JVM 1.6 |

access> LegaSuite GUI client or Workflow client.

- | | | |
|--------------|--|--|
| requirements | ❖ GUI client: Any access method available to LegaSuite GUI | ❖ Workflow client: Any HTML5-enabled web browser |
|--------------|--|--|



-  seagull.rocketsoftware.com
-  seagull@rocketsoftware.com
-  twitter.com/rocketseagull
-  facebook.com/rocketseagull
-  youtube.com/rocketseagull
-  www.rocketsoftware.com/seagull/linkedin